

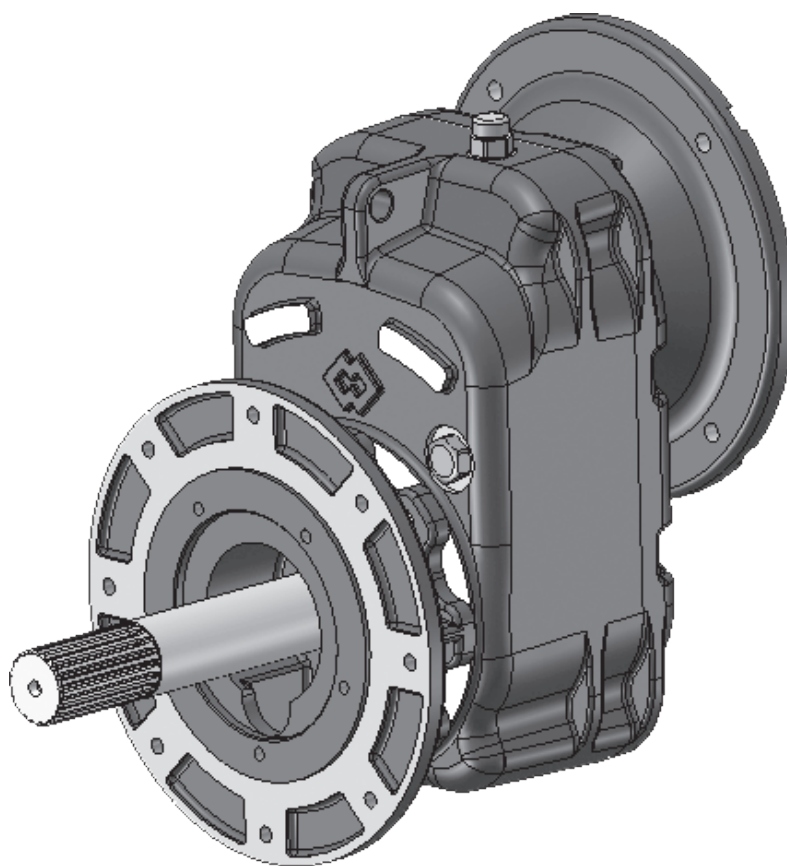


S 4_

GEAR REDUCERS

3

SPARE PARTS CATALOGUE



Manual No. CON.S4---R.A.0919.EN Issue: A
Latest Update: September 2019

ORIGINAL INSTRUCTIONS IN ENGLISH

WAMGROUP S.p.A.
Via Cavour, 338
41030 Ponte Motta
Cavezzo (MO) - ITALY

☎ + 39 / 0535 / 618111
fax + 39 / 0535 / 618226
e-mail info@wamgroup.com
internet www.wamgroup.com



WAM®



All the products described in this catalogue are manufactured according to **WAMGROUP S.p.A. Quality System procedures**. The Company's Quality System, certified in July 1994 according to International Standards **UNI EN ISO 9002** and extended to the latest release of **UNI EN ISO 9001**, ensures that the entire production process, starting from the processing of the order to the technical service after delivery, is carried out in a controlled manner that guarantees the quality standard of the product.

This publication cancels and replaces any previous edition and revision.
We reserve the right to implement modifications without notice.
This catalogue cannot be reproduced, even partially, without prior written consent by the Manufacturer.

SUMMARY

1.0	SPARE PARTS.....	1
------------	-------------------------	----------

ORDERING SPARE PARTS**A) Steel fabricated parts and bearing assemblies**

Please indicate serial n° of the conveyor applied on each trough section, as well as page and item n° in this catalogue of the part concerned. Also indicate the required quantity of parts taking into consideration the minimum supply given in the price list.

B) Gear reduction units and electric motors

Instead of the screw serial n° indicate serial n° of gear reduction unit or of the electric motor and add information requested in paragraph A).

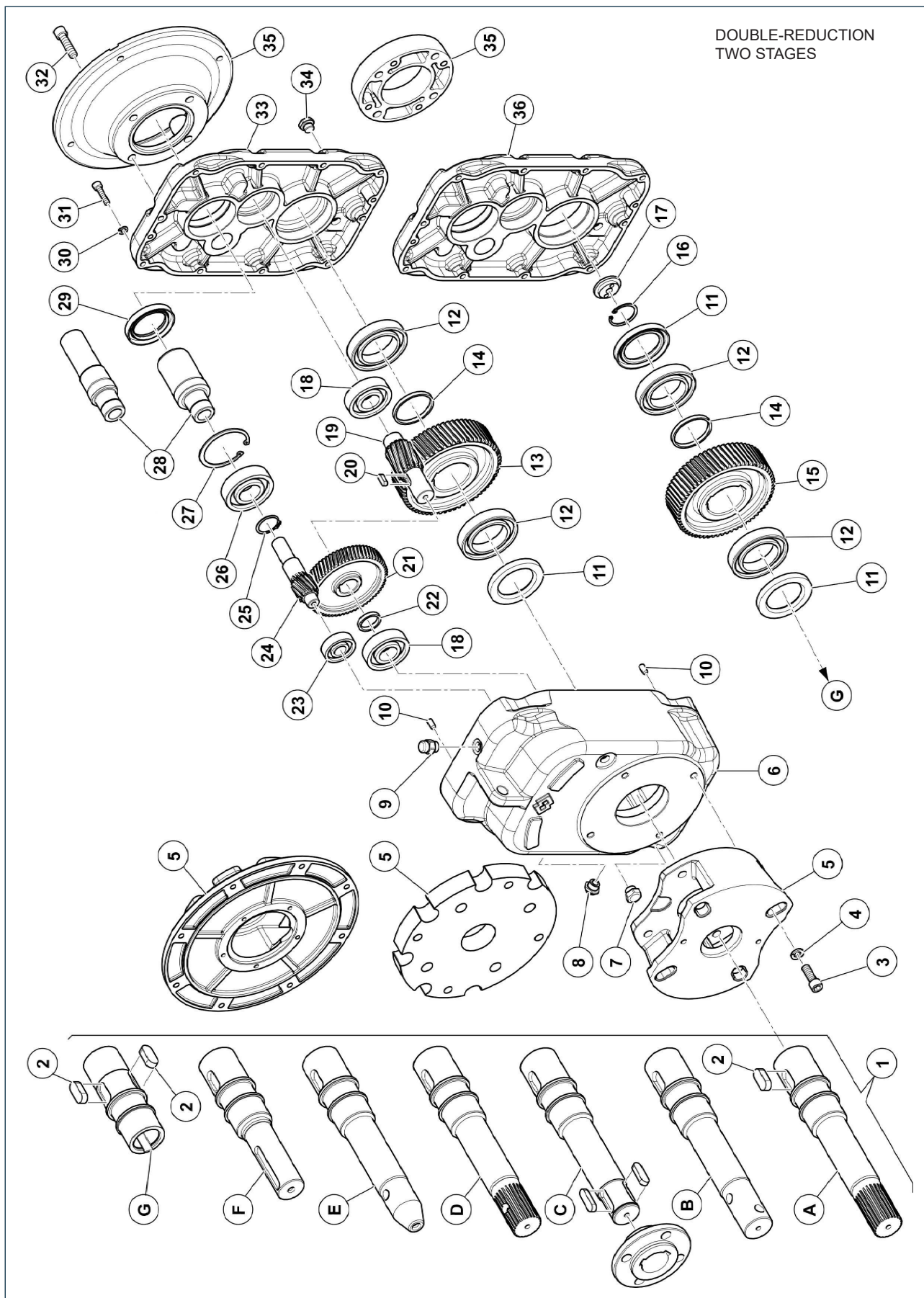
Parts not included in price list cannot be supplied. These are:

- 1) Standard parts if not included in kits.
- 2) Item numbers in brackets, i.e. single parts included in kits.

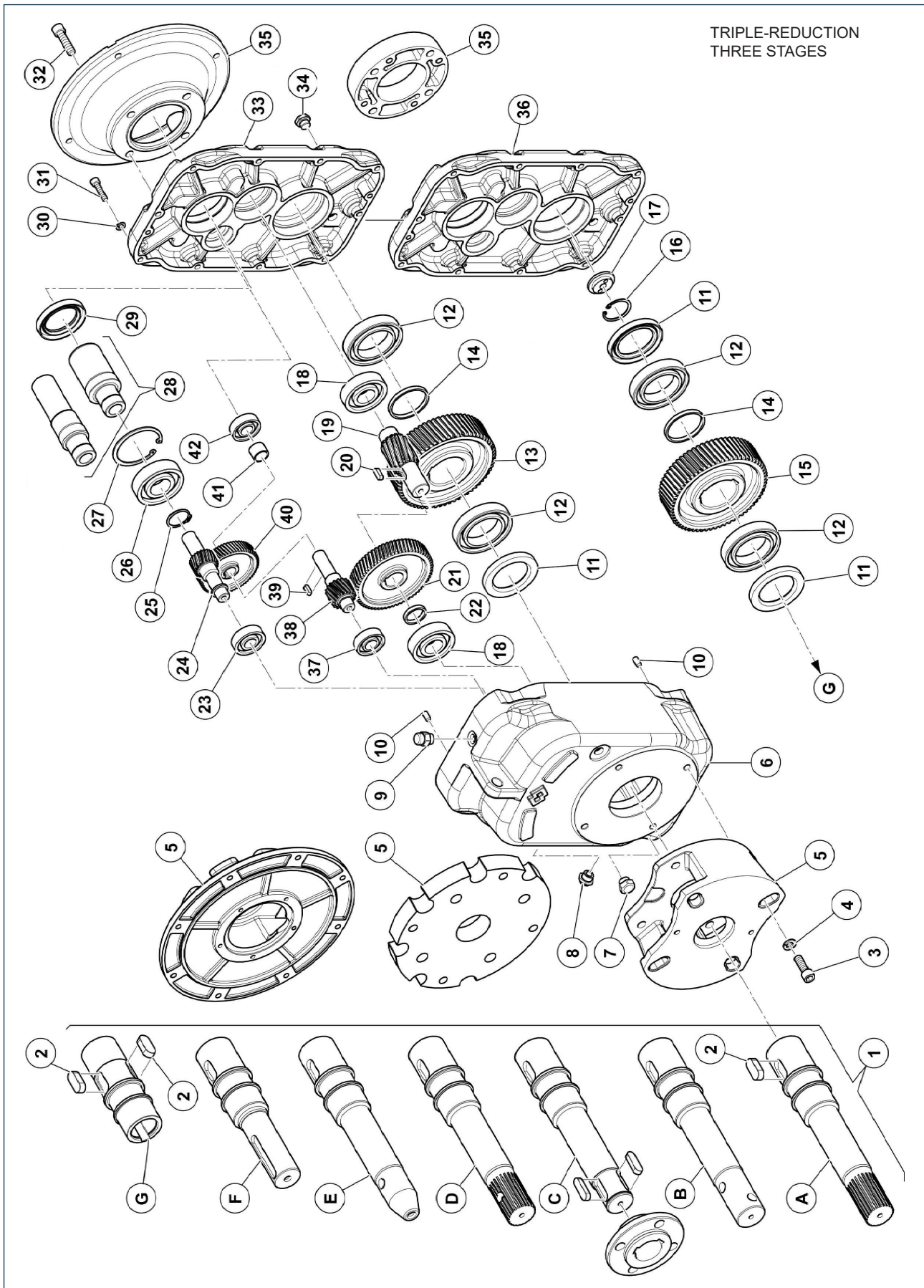
Check minimum supply before making an order.

General Supply Conditions are valid.

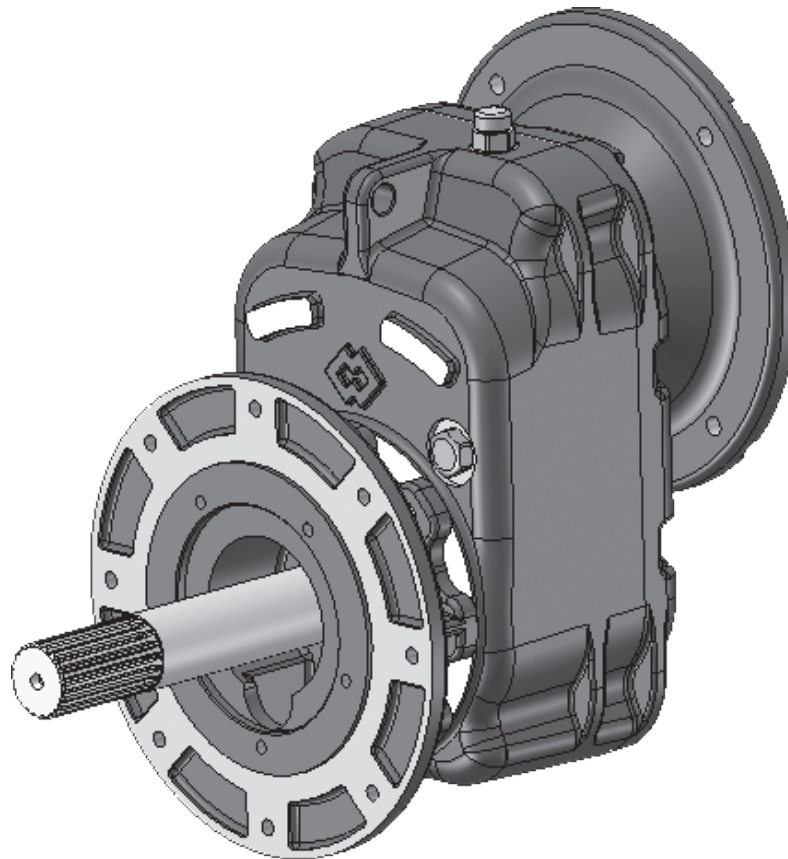
1.0 SPARE PARTS



1.0 SPARE PARTS



S 41



“S 41” TYPE GEAR REDUCTION UNITS

Gear reduction head series — **S41**

Item	Qty.	Description	Standards	Code
		Rotary shaft seal kit S41 - pam 80- 90-100-112 solid shaft		435001501
29	1	Rotary shaft seal	DIN 3760	AS 45x62x8
11	1	Rotary shaft seal	DIN 3760	A 40x62x7
		Rotary shaft seal kit S41 - pam 80-90-100-112 hollow shaft		435001502
29	1	Rotary shaft seal	DIN 3760	AS 45x62x8
11	2	Rotary shaft seal	DIN 3760	A 40x62x7
		Rotary shaft seal kit S41 - input C24 solid shaft		435001503
29	1	Rotary shaft seal	DIN 3760	AS 35x62x10
11	1	Rotary shaft seal	DIN 3760	A 40x62x7
		Rotary shaft seal kit S41 - input C24 hollow shaft		435001504
29	1	Rotary shaft seal	DIN 3760	AS 35x62x10
11	2	Rotary shaft seal	DIN 3760	A 40x62x7
		Bearing kit S41 - 2 stages solid/hollow shaft		435001490
26	1	Bearing	6305	25x62x17
23	1	Bearing	6202	15x35x11
18	2	Bearing	6303	17x47x14
12	2	Bearing	6008	40x68x15
27	1	Retaining ring for bore	DIN 472	Ø62
25	1	Retaining ring for shaft	DIN 471	Ø25
		Oil plug kit		13008330A
9	1	Breather plug + gasket		3/8"
7	1	Sealing oil plug + gasket		3/8"
34	1	Inlet/outlet oil plug + gasket		3/8"
8	1	Level plug + gasket		3/8"
		Reducer casing		
33	1	Input S41 gear reducer casing		378006178
6	1	Output S41 gear reducer casing		378006186
22	1	Spacer DI=17 DE=22 Sp=5		363002002
14	1	Spacer DI=40 DE=45 Sp=5		363002003
		PAM Input		
		Motor size 071		434002782
35	1	Input flange 071		
32	4	TCEI Screw	DIN 912	M10X35
31	4	TCEI Screw	DIN 912	M10X20

1.0 SPARE PARTS

Gear reduction head series — **S41**

Item	Qty.	Description	Standards	Code
30	4	Washer	DIN 125 A	M10
30	4	Elastic washer grower	DIN 125 B	M10
		PAM Input		
		Motor size 080/090		434002783
35	1	Input flange 080/090		
31, 32	8	TCEI Screw	DIN 912	M10X40
30	4	Washer	DIN 125 A	M10
30	4	Elastic washer grower	DIN 125 B	M10
		PAM Input		
		Motor size 100/112		434002784
35	1	Input flange 100/112		
32	4	TCEI Screw	DIN 912	M10X40
31	4	TCEI Screw	DIN 912	M12X50
30	4	Washer	DIN 125 A	M12
30	4	Elastic washer grower	DIN 125 B	M12
		C type inlet (belt transmission)		434002785
35	1	"C" Type inlet flange		
32	4	TCEI Screw	DIN 912	M10X20
		Inlet double reduction unit 1/05		
		Output gear reducer ratio i 1/05 (drive unit / input)*	(071)*	452025666
			(080)*	452025677
			(090)*	452025688
			(100-112)*	452025699
			(C)*	452025710
28	1	Input bushing		
24	1	Notched pinion		
21	1	Gear wheel		
20	1	Parallel key	DIN 6885 A	5x5x14
		Inlet double reduction unit 1/06		
		Gear reducer ratio i 1/06 (drive unit/ input)*	(071)*	452025667
			(080)*	452025678
			(090)*	452025689
			(100-112)*	452025700
			(C)*	452025711
28	1	Input bushing		
24	1	Notched pinion		
21	1	Gear wheel		
20	1	Parallel key	DIN 6885 A	5x5x14

1.0 SPARE PARTS

Gear reduction head series — **S41**

Item	Qty.	Description	Standards	Code
		Inlet double reduction unit 1/07		
		Output gear reducer ratio i 1/07 (drive unit /input)*	(071)*	452025668
			(080)*	452025679
			(090)*	452025690
			(100-112)*	452025701
			(C)*	452025712
28	1	Input bushing		
24	1	Notched pinion		
21	1	Gear wheel		
20	1	Parallel key	DIN 6885 A	5x5x14
		Inlet double reduction unit 1/08		
		Output gear reducer ratio i 1/08 (drive unit /input)*	(071)*	452025669
			(080)*	452025680
			(090)*	452025691
			(100-112)*	452025702
			(C)*	452025713
28	1	Input bushing		
24	1	Notched pinion		
21	1	Gear wheel		
20	1	Parallel key	DIN 6885 A	5x5x14
		Inlet double reduction unit 1/10		
		Output gear reducer ratio i 1/10 (drive unit /input)*	(071)*	452025670
			(080)*	452025681
			(090)*	452025692
			(100-112)*	452025703
			(C)*	452025714
28	1	Input bushing		
24	1	Notched pinion		
21	1	Gear wheel		
20	1	Parallel key	DIN 6885 A	5x5x14
		Inlet double reduction unit 1/12		
		Output gear reducer ratio i 1/12 (drive unit /input)*	(071)*	452025671
			(080)*	452025682
			(090)*	452025693
			(100-112)*	452025704
			(C)*	452025715

Gear reduction head series **S41**

Item	Qty.	Description	Standards	Code
28	1	Input bushing		
24	1	Notched pinion		
21	1	Gear wheel		
20	1	Parallel key	DIN 6885 A	5x5x14
		Inlet double reduction unit 1/16		
		Output gear reducer ratio i 1/16 (drive unit /input)*	(071)*	452025672
			(080)*	452025683
			(090)*	452025694
			(100-112)*	452025705
			(C)*	452025716
28	1	Input bushing		
24	1	Notched pinion		
21	1	Gear wheel		
20	1	Parallel key	DIN 6885 A	5x5x14
		Inlet double reduction unit 1/20		
		Output gear reducer ratio i 1/20 (drive unit /input)*	(071)*	452025673
			(080)*	452025684
			(090)*	452025695
			(100-112)*	452025706
			(C)*	452025717
28	1	Input bushing		
24	1	Notched pinion		
21	1	Gear wheel		
20	1	Parallel key	DIN 6885 A	5x5x14
		Inlet double reduction unit 1/25		
		Output gear reducer ratio i 1/25 (drive unit /input)*	(071)*	452025674
			(080)*	452025685
			(090)*	452025696
			(100-112)*	452025707
			(C)*	452025718
28	1	Input bushing		
24	1	Notched pinion		
21	1	Gear wheel		
20	1	Parallel key	DIN 6885 A	5x5x14
		Inlet double reduction unit 1/31		

Gear reduction head series — **S41**

Item	Qty.	Description	Standards	Code
		Output gear reducer ratio i 1/31 (drive unit /input)*	(071)*	452025675
			(080)*	452025686
			(090)*	452025697
			(100-112)*	452025708
			(C)*	452025719
28	1	Input bushing		
24	1	Notched pinion		
21	1	Gear wheel		
20	1	Parallel key	DIN 6885 A	5x5x14
		Inlet double reduction unit 1/40		
		Output gear reducer ratio i 1/40 (drive unit /input)*	(071)*	452025676
			(080)*	452025687
			(090)*	452025698
			(100-112)*	452025709
			(C)*	452025720
28	1	Input bushing		
24	1	Notched pinion		
21	1	Gear wheel		
20	1	Parallel key	DIN 6885 A	5x5x14
		1/05 Outlet double reduction unit - 1/25		452025662
19	1	Notched pinion		
13	1	Gear wheel		
2	1	Parallel key	DIN 6885 A	12x8x25
		1/31 Outlet double reduction unit - 1/40		452025663
19	1	Notched pinion		
13	1	Gear wheel		
2	1	Parallel key	DIN 6885 A	12x8x25
		1/05 Outlet double reduction unit - 1/25 (hollow shaft)		452025664
19	1	Notched pinion		
15	1	Gear wheel		
2	1	Parallel key	DIN 6885 A	12x6x25
		1/31 Outlet double reduction unit - 1/40 (hollow shaft)		452025665
19	1	Notched pinion		
15	1	Gear wheel		
2	1	Parallel key	DIN 6885 A	12x6x25

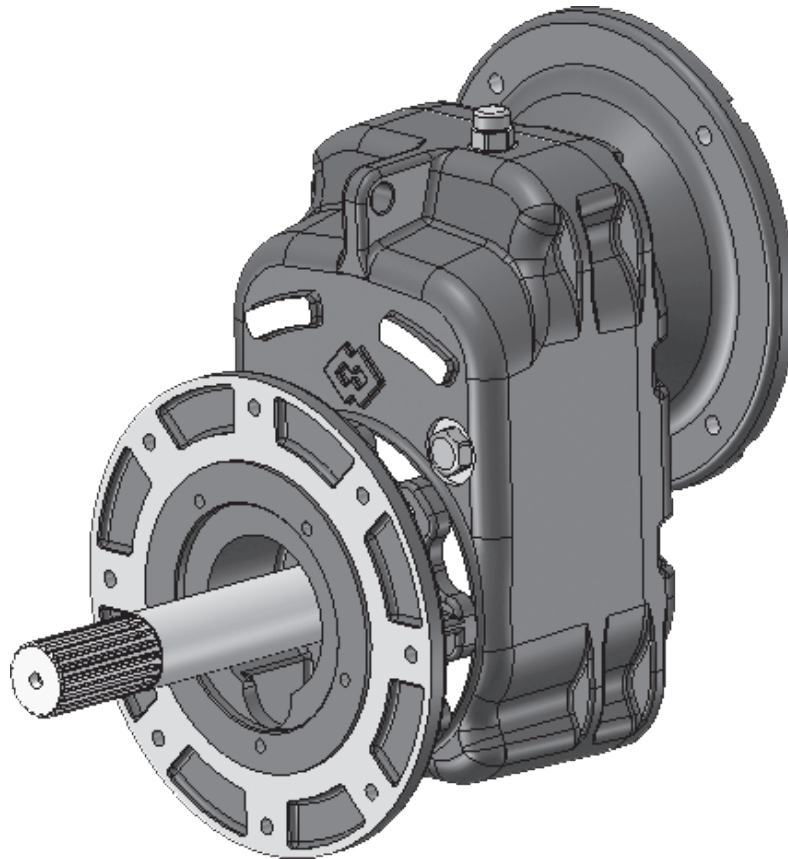
Gear reduction head series **S41**

Item	Qty.	Description	Standards	Code
		Output flange A3		434002762
5	1	Flange		
3	4	TCEI Screw	DIN 912	M10X25
		Output flange K		434002756
5	1	Flange		
3	4	TCEI Screw	DIN 912	M10X25
		B4 - B5 - B6 - B7- B8 Output Flange- D.40 (XUJ) shaft		434002757
5	1	Flange		
3	4	TCEI Screw	DIN 912	M10X35
4	4	Washer	DIN 125 A	M10
4	4	Elastic washer grower	DIN 125 B	M10
		B4 - B5 - B6 - B7- B8 Output Flange- D.28 (XUJ) shaft		434002758
5	1	Flange		
3	4	TCEI Screw	DIN 912	M10X35
4	4	Washer	DIN 125 A	M10
4	4	Elastic washer grower	DIN 125 B	M10
		B4 - B5 - B6 - B7- B8 Output Flange- D.40 shaft		434002759
5	1	Flange		
3	4	TCEI Screw	DIN 912	M10X35
4	4	Washer	DIN 125 A	M10
4	4	Elastic washer grower	DIN 125 B	M10
		B4 - B5 - B6 - B7- B8 Output Flange- D.28 shaft		434002760
5	1	Flange		
3	4	TCEI Screw	DIN 912	M10X35
4	4	Washer	DIN 125 A	M10
4	4	Elastic washer grower	DIN 125 B	M10
		ES0 - VE0 Output Flange		434002761
5	1	Flange		
3	4	TE Screw	DIN 933	M10X35
4	4	Washer	DIN 125 A	M10
4	4	Elastic washer grower	DIN 125 B	M10
		ES1 - VE1 Output Flange		434002754
5	1	Flange		
3	4	TE Screw	DIN 933	M10X35
4	4	Washer	DIN 125 A	M10

Gear reduction head series **S41**

Item	Qty.	Description	Standards	Code
4	4	Elastic washer grower	DIN 125 B	M10
		ES2 - VE2 Output Flange		434002755
5	1	Flange		
3	4	TE Screw	DIN 933	M10X35
4	4	Washer	DIN 125 A	M10
4	4	Elastic washer grower	DIN 125 B	M10
A	1	Output shaft S41 output A3 D.28		358003538
A	1	Output shaft S41 output B4/ES D.28		358003539
B	1	Output shaft S41 output B5 D.28		358003540
C	1	Output shaft S41 output B6 D.28		452028266
D	1	Output shaft S41 output B7/VE D.28		358003542
E	1	Output shaft S41 output B8 D.28 aisi 304		358003543
E	1	Output shaft S41 output B8 D.28 aisi 316		358003544
F	1	Output shaft S41 output K D.25		358003545
G	1	Output shaft S41 HOLLOW D.25		358003546
A	1	Output shaft S41 output A3 D.40		358003547
A	1	Output shaft S41 output B4/ES D.40		358003548
B	1	Output shaft S41 output B5 D.40		358003549
C	1	Output shaft S41 output B6 D.40		452028267
D	1	Output shaft S41 output B7/VE D.40		358003551

S 43



“S 43” TYPE GEAR REDUCTION UNITS

Gear reduction head series — **S43**

Item	Qty.	Description	Standards	Code
		Rotary shaft seal kit S43 - pam 80-90-100-112 solid shaft		435001505
29	1	Rotary shaft seal	DIN 3760	AS 45x80x10
11	1	Rotary shaft seal	DIN 3760	AS 40x80x10
		Rotary shaft seal kit S43 - pam 80-90-100-112 hollow shaft		435001506
29	1	Rotary shaft seal	DIN 3760	AS 45x80x10
11	2	Rotary shaft seal	DIN 3760	A 50x80x8
		Rotary shaft seal kit S43 - pam 132 solid shaft		435001507
29	1	Rotary shaft seal	DIN 3760	AS 40x80x10
11	1	Rotary shaft seal	DIN 3760	AS 55x80x10
		Rotary shaft seal kit S43 - pam 132 hollow shaft		435001508
29	1	Rotary shaft seal	DIN 3760	AS 55x80x10
11	2	Rotary shaft seal	DIN 3760	A 50x80x8
		Rotary shaft seal kit S43 - input C28 solid shaft		435001509
29	1	Rotary shaft seal	DIN 3760	AS 40x80x10
11	1	Rotary shaft seal	DIN 3760	AS 40x80x10
		Rotary shaft seal kit S43 - input C28 hollow shaft		435001510
29	1	Rotary shaft seal	DIN 3760	AS 40x80x10
11	2	Rotary shaft seal	DIN 3760	A 50x80x8
		Bearing kit S43 - 2 stages with solid shaft output		435001491
26	1	Bearing	6206	30x62x16
23	1	Bearing	6303	17x47x14
18	2	Bearing	6304	20x52x15
12	2	Bearing	6208	40x80x18
27	1	Retaining ring for bore	DIN 472	Ø62
25	1	Retaining ring for shaft	DIN 471	Ø30
/	1	Retaining ring for bore	DIN 472	Ø80
		Bearing kit S43 - 2 stages with hollow shaft output		435001492
26	1	Bearing	6206	30x62x16
23	1	Bearing	6303	17x47x14
18	2	Bearing	6304	20x52x15
12	2	Bearing	6210	50x80x16

Gear reduction head series **S43**

Item	Qty.	Description	Standards	Code
27	1	Retaining ring for bore	DIN 472	Ø62
25	1	Retaining ring for shaft	DIN 471	Ø30
/	2	Retaining ring for bore	DIN 472	Ø80
		Bearing kit S43 - 3 stages with solid shaft output		435001493
31	1	Bearing	6206	30x62x16
28	1	Bearing	6303	17x47x14
18	2	Bearing	6304	20x52x15
23	2	Bearing	6203	17x40x12
12	2	Bearing	6208	40x80x18
27	1	Retaining ring for bore	DIN 472	Ø62
25	1	Retaining ring for shaft	DIN 471	Ø30
/	1	Retaining ring for bore	DIN 472	Ø80
		Bearing kit S43 - 3 stages with hollow shaft output		435001494
31	1	Bearing	6206	30x62x16
28	1	Bearing	6303	17x47x14
18	2	Bearing	6304	20x52x15
23	2	Bearing	6203	17x40x12
12	2	Bearing	6010	50x80x16
27	1	Retaining ring for bore	DIN 472	Ø62
25	1	Retaining ring for shaft	DIN 471	Ø30
/	2	Retaining ring for bore	DIN 472	Ø80
16	1	Retaining ring for shaft	DIN 471	Ø35
		Oil plug kit		13008330A
9	1	Breather plug + gasket		3/8"
7	1	Sealing oil plug + gasket		3/8"
34	1	Inlet/outlet oil plug + gasket		3/8"
8	1	Level plug + gasket		3/8"
		2 stages reducer casing		
33	1	Input S43 (2s) gear reducer casing		378006180
6	1	Output S43 (2s) gear reducer casing		378006187
22	1	DI=20 DE=27 SP=5 Spacer		363002004
14	1	DI=40 DE=47 SP=5 Spacer		363002006
		3 stages reducer casing		
36	1	Input S43 (3s) gear reducer casing		378006841
6	1	Output S43 (3s) gear reducer casing		378006847
22	1	DI=20 DE=27 SP=5 Spacer		363002004

Gear reduction head series **S43**

Item	Qty.	Description	Standards	Code
14	1	DI=40 DE=47 SP=5 Spacer		363002006
27	1	DI=17 DE=21 SP=11 (3s) Spacer		363002005
		PAM Input		
		Motor size 080/090		434002788
35	1	Input flange 080/090		
31, 32	8	TCEI Screw	DIN 912	M10X40
30	4	Washer	DIN 125 A	M10
30	4	Elastic washer grower	DIN 125 B	M10
		PAM Input		
		Motor size 100/112		434002787
35	1	Input flange 100/112		
32	4	TCEI Screw	DIN 912	M10X40
31	4	TCEI Screw	DIN 912	M12X50
30	4	Washer	DIN 125 A	M12
30	4	Elastic washer grower	DIN 125 B	M12
		PAM Input		
		Motor size 132		434002786
35	1	Input flange 132		
32	4	TCEI Screw	DIN 912	M10X40
31	4	TCEI Screw	DIN 912	M12X50
30	4	Washer	DIN 125 A	M12
30	4	Elastic washer grower	DIN 125 B	M12
		C type inlet (belt transmission)		434002789
35	1	"C" Type inlet flange		
32	4	TCEI Screw	DIN 912	M10X20
		Inlet double reduction unit 1/05		
		Output gear reducer ratio i 1/05 (drive unit /input)*	(080)*	452025725
			(090)*	452025741
			(100-112)*	452025753
			(132)*	452025765
			(C)*	452025777
28	1	Input bushing		
24	1	Notched pinion		
21	1	Gear wheel		
20	1	Parallel key	DIN 6885 A	6x6x18
		Inlet double reduction unit 1/06		

Gear reduction head series — **S43**

Item	Qty.	Description	Standards	Code
		Output gear reducer ratio i 1/06 (drive unit /input)*	(080)*	452025726
			(090)*	452025742
			(100-112)*	452025754
			(132)*	452025766
			(C)*	452025778
28	1	Input bushing		
24	1	Notched pinion		
21	1	Gear wheel		
20	1	Parallel key	DIN 6885 A	6x6x18
		Inlet double reduction unit 1/07		
		Output gear reducer ratio i 1/07 (drive unit /input)*	(080)*	452025727
			(090)*	452025743
			(100-112)*	452025755
			(132)*	452025767
			(C)*	452025779
28	1	Input bushing		
24	1	Notched pinion		
21	1	Gear wheel		
20	1	Parallel key	DIN 6885 A	6x6x18
		Inlet double reduction unit 1/08		
		Output gear reducer ratio i 1/08 (drive unit /input)*	(080)*	452025728
			(090)*	452025744
			(100-112)*	452025756
			(132)*	452025768
			(C)*	452025780
28	1	Input bushing		
24	1	Notched pinion		
21	1	Gear wheel		
20	1	Parallel key	DIN 6885 A	6x6x18
		Inlet double reduction unit 1/10		
		Output gear reducer ratio i 1/10 (drive unit /input)*	(080)*	452025729
			(090)*	452025745
			(100-112)*	452025757
			(132)*	452025769
			(C)*	452025781

1.0 SPARE PARTS

Gear reduction head series **S43**

Item	Qty.	Description	Standards	Code
28	1	Input bushing		
24	1	Notched pinion		
21	1	Gear wheel		
20	1	Parallel key	DIN 6885 A	6x6x18
		Inlet double reduction unit 1/12		
		Output gear reducer ratio i 1/12 (drive unit /input)*	(080)*	452025730
			(090)*	452025746
			(100-112)*	452025758
			(132)*	452025770
			(C)*	452025782
28	1	Input bushing		
24	1	Notched pinion		
21	1	Gear wheel		
20	1	Parallel key	DIN 6885 A	6x6x18
		Inlet double reduction unit 1/16		
		Output gear reducer ratio i 1/16 (drive unit /input)*	(080)*	452025731
			(090)*	452025747
			(100-112)*	452025759
			(132)*	452025771
			(C)*	452025783
28	1	Input bushing		
24	1	Notched pinion		
21	1	Gear wheel		
20	1	Parallel key	DIN 6885 A	6x6x18
		Inlet double reduction unit 1/20		
		Output gear reducer ratio i 1/20 (drive unit /input)*	(080)*	452025732
			(090)*	452025748
			(100-112)*	452025760
			(132)*	452025772
			(C)*	452025784
28	1	Input bushing		
24	1	Notched pinion		
21	1	Gear wheel		
20	1	Parallel key	DIN 6885 A	6x6x18
		Inlet double reduction unit 1/25		

Gear reduction head series — **S43**

Item	Qty.	Description	Standards	Code
		Output gear reducer ratio i 1/25 (drive unit /input)*	(080)*	452025733
			(090)*	452025749
			(100-112)*	452025761
			(132)*	452025773
			(C)*	452025785
28	1	Input bushing		
24	1	Notched pinion		
21	1	Gear wheel		
20	1	Parallel key	DIN 6885 A	6x6x18
		1/31 (2 stages) Inlet double reduction unit		
		Output gear reducer ratio i 1/31 (2 stages) (drive unit / input)*	(080)*	452025734
			(090)*	452025750
			(100-112)*	452025762
			(132)*	452025774
			(C)*	452025786
28	1	Input bushing		
24	1	Notched pinion		
21	1	Gear wheel		
20	1	Parallel key	DIN 6885 A	6x6x18
		1/40 (2 stages) Inlet double reduction unit		
		Output gear reducer ratio i 1/40 (2 stages) (drive unit / input	(080)*	452025735
			(090)*	452025751
			(100-112)*	452025763
			(132)*	452025775
			(C)*	452025787
28	1	Input bushing		
24	1	Notched pinion		
21	1	Gear wheel		
20	1	Parallel key	DIN 6885 A	6x6x18
		Inlet double reduction unit 1/31- 1/80 (3 stages)		
		Gear reducer ratio i 1/31 - 1/80 (3 stages) (drive unit/input)*	(080)*	452025736
			(090)*	452025752
			(100-112)*	452025764
			(132)*	452025776
			(C)*	452025788

1.0 SPARE PARTS

Gear reduction head series **S43**

Item	Qty.	Description	Standards	Code
28	1	Input bushing		
24	1	Notched pinion		
40	1	Gear wheel		
39	1	Parallel key	DIN 6885 A	5x5x14
		Intermediate double reduction unit - 1/31 (3 stages)		452025737
38	1	Notched pinion		
21	1	Gear wheel		
20	1	Parallel key	DIN 6885 A	6x6x18
		Intermediate double reduction unit - 1/40 (3 stages)		452025738
38	1	Notched pinion		
21	1	Gear wheel		
20	1	Parallel key	DIN 6885 A	6x6x18
		Intermediate double reduction unit 1/50 - 1/63 (3 stages)		452025739
38	1	Notched pinion		
21	1	Gear wheel		
20	1	Parallel key	DIN 6885 A	6x6x18
		Intermediate double reduction unit - 1/80 (3 stages)		452025740
38	1	Notched pinion		
21	1	Gear wheel		
20	1	Parallel key	DIN 6885 A	6x6x18
		1/05 Outlet double reduction unit - 1/25 (2 stages) 1/31- 1/50 (3 stages)		452025721
19	1	Notched pinion		
13	1	Gear wheel		
2	1	Parallel key	DIN 6885 A	12x8x32
		1/31 Outlet double reduction unit - 1/40 (2 stages) 1/63- 1/80 (3 stages)		452025722
19	1	Notched pinion		
13	1	Gear wheel		
2	1	Parallel key	DIN 6885 A	12x8x32
		Outlet double reduction unit (hollow shaft) 1/05 - 1/25 (2 stages) 1/31- 1/50 (3 stages)		452025723
19	1	Notched pinion		
15	1	Gear wheel		
2	1	Parallel key	DIN 6885 A	16x7x32

Gear reduction head series — **S43**

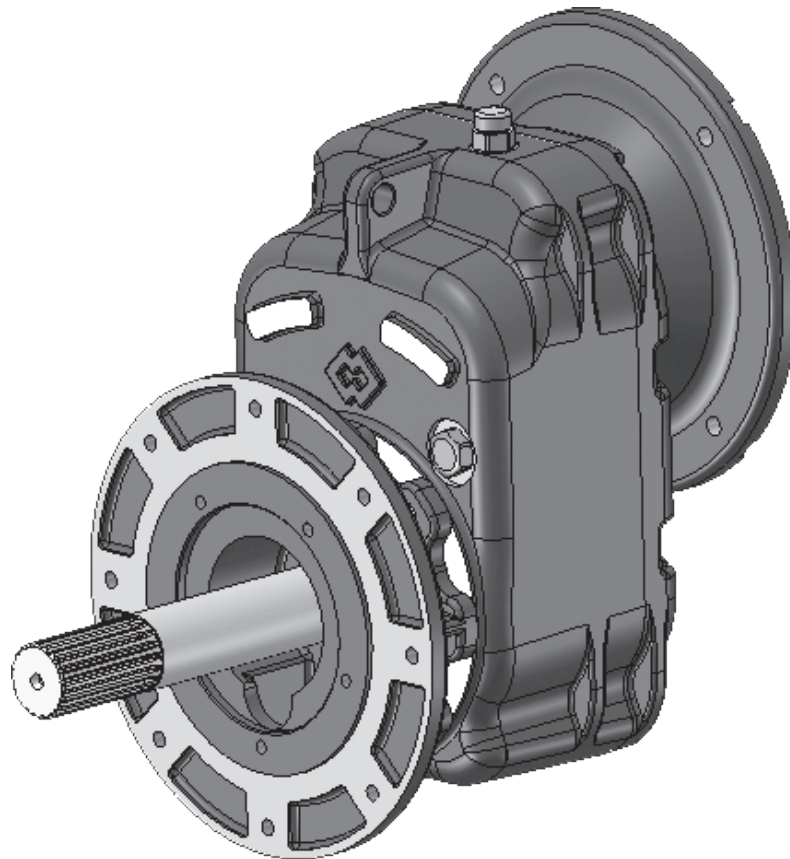
Item	Qty.	Description	Standards	Code
		Outlet double reduction unit (hollow shaft) 1/31 - 1/40 (2 stages) 1/63- 1/80 (3 stages)		452025724
19	1	Notched pinion		
15	1	Gear wheel		
2	1	Parallel key	DIN 6885 A	16x7x32
		Output flange A3		434002764
5	1	Flange		
3	4	TCEI Screw	DIN 912	M12X35
		Output flange K		434002765
5	1	Flange		
3	4	TCEI Screw	DIN 912	M12X35
		B4 - B5 - B6 - B7- B8 Output Flange		434002766
5	1	Flange		
3	4	TCEI Screw	DIN 912	M12X35
4	4	Washer	DIN 125 A	M12
4	4	Elastic washer grower	DIN 125 B	M12
		(XUJ) B4 - B5 - B6 - B7- B8 Output Flange		434002767
5	1	Flange		
3	4	TCEI Screw	DIN 912	M12X35
4	4	Washer	DIN 125 A	M12
4	4	Elastic washer grower	DIN 125 B	M12
		ES1 - VE1 Output Flange		434002771
5	1	Flange		
3	4	TE Screw	DIN 933	M12X35
4	4	Washer	DIN 125 A	M12
4	4	Elastic washer grower	DIN 125 B	M12
		ES2 - VE2 Output Flange		434002770
5	1	Flange		
3	4	TE Screw	DIN 933	M12X35
4	4	Washer	DIN 125 A	M12
4	4	Elastic washer grower	DIN 125 B	M12
		ES3 - VE3 Output Flange		434002769
5	1	Flange		
3	4	TE Screw	DIN 933	M12X35
4	4	Washer	DIN 125 A	M12

1.0 SPARE PARTS

Gear reduction head series **S43**

Item	Qty.	Description	Standards	Code
4	4	Elastic washer grower	DIN 125 B	M12
A	1	Output shaft S43 output A3 D.40		358003552
A	1	Output shaft S43 output B4/ES D.40		358003553
B	1	Output shaft S43 output B5 D.40		358003554
C	1	Output shaft S43 output B6 D.40		452028268
D	1	Output shaft S43 output B7/VE D.40		358003556
E	1	Output shaft S43 output B8 D.40 aisi 304		358003557
E	1	Output shaft S43 output B8 D.40 aisi 316		358003558
F	1	Output shaft S43 output K D.35		358003559
/	1	Output shaft S43 output VE-XAP D.40		358003560
G	1	Hollow output shaft S43 D.25		358003561

S 45



“S 45” TYPE GEAR REDUCTION UNITS

Gear reduction head series — **S45**

Item	Qty.	Description	Standards	Code
		Rotary shaft seal kit S45 - pam -90-100-112 solid shaft		435001511
29	1	Rotary shaft seal	DIN 3760	AS 45x80x10
11	1	Rotary shaft seal	DIN 3760	A 60x90x10
		Rotary shaft seal kit S45 - pam -90-100-112 hollow shaft		435001512
29	1	Rotary shaft seal	DIN 3760	AS 45x80x10
11	2	Rotary shaft seal	DIN 3760	A 60x90x10
		Rotary shaft seal kit S45 - pam -132 solid shaft		435001513
29	1	Rotary shaft seal	DIN 3760	AS 55x80x10
11	1	Rotary shaft seal	DIN 3760	A 60x90x10
		Rotary shaft seal kit S45 - pam -132 hollow shaft		435001514
29	1	Rotary shaft seal	DIN 3760	AS 55x80x10
11	2	Rotary shaft seal	DIN 3760	A 60x90x10
		Rotary shaft seal kit S45 - pam 160- 180 solid shaft		435001515
29	1	Rotary shaft seal	DIN 3760	AS 64x80x8
11	1	Rotary shaft seal	DIN 3760	A 60x90x10
		Rotary shaft seal kit S45 - pam 160-180 hollow shaft		435001516
29	1	Rotary shaft seal	DIN 3760	AS 64x80x8
11	2	Rotary shaft seal	DIN 3760	A 60x90x10
		Rotary shaft seal kit S45 - output C38 solid shaft		435001517
29	1	Rotary shaft seal	DIN 3760	AS 45x80x10
11	1	Rotary shaft seal	DIN 3760	A 60x90x10
		Rotary shaft seal kit S45 - output C38 hollow shaft		435001518
29	1	Rotary shaft seal	DIN 3760	AS 45x80x10
11	2	Rotary shaft seal	DIN 3760	A 60x90x10
		Bearing kit S45 - 2 stages with solid- hollow shaft output		435001495
26	1	Bearing	6307	35x80x21
23	1	Bearing	6304	20x52x15
18	2	Bearing	6306	30x72x19
12	2	Bearing	6012	60x95x18
27	1	Retaining ring for bore	DIN 472	Ø80
25	1	Retaining ring for shaft	DIN 471	Ø35

1.0 SPARE PARTS

Gear reduction head series — **S45**

Item	Qty.	Description	Standards	Code
		Bearing kit S45 - 3 stages with solid- hollow shaft output		435001496
31	1	Bearing	6307	35x80x21
28	1	Bearing	6304	20x52x15
18	2	Bearing	6306	30x72x19
23	2	Bearing	6204	20x47x14
12	2	Bearing	6012	60x95x18
27	2	Retaining ring for bore	DIN 472	Ø80
25	1	Retaining ring for shaft	DIN 471	Ø35
		Oil plug kit		13008330A
9	1	Breather plug + gasket		3/8"
7	1	Sealing oil plug + gasket		3/8"
34	1	Inlet/outlet oil plug + gasket		3/8"
8	1	Level plug + gasket		3/8"
		2 stages reducer casing		
33	1	Input S45 (2s) gear reducer casing		378006182
6	1	Output S45 (2s) gear reducer casing		378006188
22	1	DI=30 DE=37 SP=6 Spacer		363002008
14	1	DI=60 DE=67 SP=6.5 Spacer		363002010
		3 stages reducer casing		
36	1	Input S45 (3s) gear reducer casing		378006843
6	1	Output S45 (3s) gear reducer casing		378006848
22	1	DI=30 DE=37 SP=6 Spacer		363002008
14	1	DI=60 DE=67 SP=6.5 Spacer		363002010
27	1	RID Spacer (3s) S45 - DI=20 DE=25 SP=18,5		363002009
		PAM Input		
		Motor size 080/090		434002790
35	1	Input flange 080/090		
32	4	TCEI Screw	DIN 912	M10X50
31	4	TCEI Screw	DIN 912	M12X45
30	4	Washer	DIN 125 A	M10
30	4	Elastic washer grower	DIN 125 B	M10
		PAM Input		
		Motor size 100/112		434002791
35	1	Input flange 100/112		
32	4	TCEI Screw	DIN 912	M12X45
31	4	TCEI Screw	DIN 912	M12X50

1.0 SPARE PARTS

Gear reduction head series **S45**

Item	Qty.	Description	Standards	Code
30	4	Washer	DIN 125 A	M12
30	4	Elastic washer grower	DIN 125 B	M12
		PAM Input		
		Motor size 132		434002792
35	1	Input flange 132		
32	4	TCEI Screw	DIN 912	M12X45
31	4	TCEI Screw	DIN 912	M12X50
30	4	Washer	DIN 125 A	M12
30	4	Elastic washer grower	DIN 125 B	M12
		PAM Input		
		Motor size 160/180		434002793
35	1	Input flange 160/180		
32	4	TCEI Screw	DIN 912	M12X45
31	4	TCEI Screw	DIN 912	M16X60
30	4	Washer	DIN 125 A	M16
30	4	Elastic washer grower	DIN 125 B	M16
		C type inlet (belt transmission)		434002794
35	1	"C" Type inlet flange		
32	4	TCEI Screw	DIN 912	M12X35
		Inlet double reduction unit 1/05		
		Output gear reducer ratio i 1/05 (drive unit /input)*	(090)*	452025793
			(100-112)*	452025809
			(132)*	452025821
			(160)*	452025833
			(180)*	452025845
			(C)*	452025857
28	1	Input bushing		
24	1	Notched pinion		
21	1	Gear wheel		
20	1	Parallel key	DIN 6885 A	8x7x22
		Inlet double reduction unit 1/06		
		Output gear reducer ratio i 1/06 (drive unit /input)*	(090)*	452025794
			(100-112)*	452025810
			(132)*	452025822
			(160)*	452025834
			(180)*	452025846
			(C)*	452025858

Gear reduction head series — **S45**

Item	Qty.	Description	Standards	Code
28	1	Input bushing		
24	1	Notched pinion		
21	1	Gear wheel		
20	1	Parallel key	DIN 6885 A	8x7x22
		Inlet double reduction unit 1/07		
		Output gear reducer ratio i 1/07 (drive unit /input)*	(090)*	452025795
			(100-112)*	452025811
			(132)*	452025823
			(160)*	452025835
			(180)*	452025847
			(C)*	452025859
28	1	Input bushing		
24	1	Notched pinion		
21	1	Gear wheel		
20	1	Parallel key	DIN 6885 A	8x7x22
		Inlet double reduction unit 1/08		
		Output gear reducer ratio i 1/08 (drive unit /input)*	(090)*	452025796
			(100-112)*	452025812
			(132)*	452025824
			(160)*	452025836
			(180)*	452025848
			(C)*	452025860
28	1	Input bushing		
24	1	Notched pinion		
21	1	Gear wheel		
20	1	Parallel key	DIN 6885 A	8x7x22
		Inlet double reduction unit 1/10		
		Output gear reducer ratio i 1/10 (drive unit /input)*	(090)*	452025797
			(100-112)*	452025813
			(132)*	452025825
			(160)*	452025837
			(180)*	452025849
			(C)*	452025861
28	1	Input bushing		
24	1	Notched pinion		
21	1	Gear wheel		
20	1	Parallel key	DIN 6885 A	8x7x22
		Inlet double reduction unit 1/12		

Gear reduction head series **S45**

Item	Qty.	Description	Standards	Code
		Output gear reducer ratio i 1/12 (drive unit /input)*	(090)*	452025798
			(100-112)*	452025814
			(132)*	452025826
			(160)*	452025838
			(180)*	452025850
			(C)*	452025862
28	1	Input bushing		
24	1	Notched pinion		
21	1	Gear wheel		
20	1	Parallel key	DIN 6885 A	8x7x22
		Inlet double reduction unit 1/16		
		Output gear reducer ratio i 1/16 (drive unit /input)*	(090)*	452025799
			(100-112)*	452025815
			(132)*	452025827
			(160)*	452025839
			(180)*	452025851
			(C)*	452025863
28	1	Input bushing		
24	1	Notched pinion		
21	1	Gear wheel		
20	1	Parallel key	DIN 6885 A	8x7x22
		Inlet double reduction unit 1/20		
		Output gear reducer ratio i 1/20 (drive unit /input)*	(090)*	452025800
			(100-112)*	452025816
			(132)*	452025828
			(160)*	452025840
			(180)*	452025852
			(C)*	452025864
28	1	Input bushing		
24	1	Notched pinion		
21	1	Gear wheel		
20	1	Parallel key	DIN 6885 A	8x7x22
		Inlet double reduction unit 1/25		
		Output gear reducer ratio i 1/25 (drive unit /input)*	(090)*	452025801
			(100-112)*	452025817
			(132)*	452025829
			(160)*	452025841
			(180)*	452025853
			(C)*	452025865

1.0 SPARE PARTS

Gear reduction head series — **S45**

Item	Qty.	Description	Standards	Code
28	1	Input bushing		
24	1	Notched pinion		
21	1	Gear wheel		
20	1	Parallel key	DIN 6885 A	8x7x22
		1/31 (2 stages) Inlet double reduction unit		
		Output gear reducer ratio i 1/31 (2 stages) (drive unit / input)*	(090)*	452025802
			(100-112)*	452025818
			(132)*	452025830
			(160)*	452025842
			(180)*	452025854
			(C)*	452025866
28	1	Input bushing		
24	1	Notched pinion		
21	1	Gear wheel		
20	1	Parallel key	DIN 6885 A	8x7x22
		1/40 (2 stages) Inlet double reduction unit		
		Output gear reducer ratio i 1/40 (2 stages) (drive unit / input)*	(090)*	452025803
			(100-112)*	452025819
			(132)*	452025831
			(160)*	452025843
			(180)*	452025855
			(C)*	452025867
28	1	Input bushing		
24	1	Notched pinion		
21	1	Gear wheel		
20	1	Parallel key	DIN 6885 A	8x7x22
		Inlet double reduction unit 1/31 - 1/80 (3 stages)		
		Gear reducer ratio i 1/31 - 1/80 (3 stages) (drive unit/input)*	(090)*	452025804
			(100-112)*	452025820
			(132)*	452025832
			(160)*	452025844
			(180)*	452025856
			(C)*	452025868

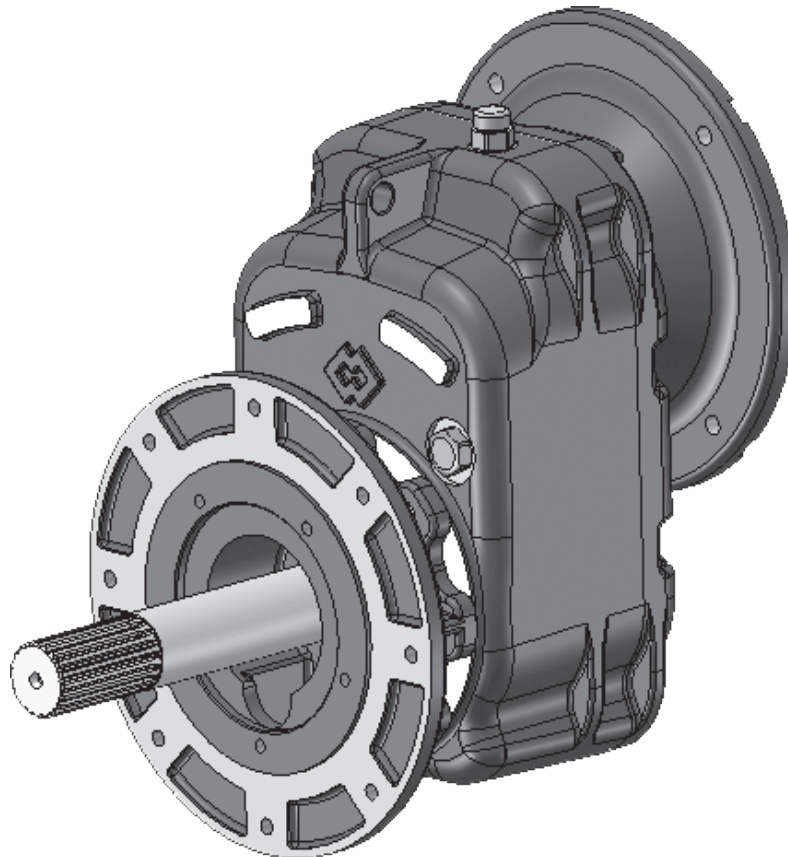
Gear reduction head series **S45**

Item	Qty.	Description	Standards	Code
28	1	Input bushing		
24	1	Notched pinion		
40	1	Gear wheel		
39	1	Parallel key	DIN 6885 A	6x6x18
		Intermediate double reduction unit - 1/31 (3 stages)		452025805
38	1	Notched pinion		
21	1	Gear wheel		
20	1	Parallel key	DIN 6885 A	8x7x22
		Intermediate double reduction unit - 1/40 (3 stages)		452025806
38	1	Notched pinion		
21	1	Gear wheel		
20	1	Parallel key	DIN 6885 A	8x7x22
		Intermediate double reduction unit 1/50 - 1/63 (3 stages)		452025807
38	1	Notched pinion		
21	1	Gear wheel		
20	1	Parallel key	DIN 6885 A	8x7x22
		Intermediate double reduction unit 1/63 - 1/80 (3 stages)		452025808
38	1	Notched pinion		
21	1	Gear wheel		
20	1	Parallel key	DIN 6885 A	8x7x22
		1/05 Outlet double reduction unit - 1/25 (2 stages) 1/31- 1/63 (3 stages)		452025789
19	1	Notched pinion		
13	1	Gear wheel		
2	1	Parallel key	DIN 6885 A	18x11x40
		1/31 Outlet double reduction unit - 1/40 (2 stages) 1/80 (3 stages)		452025790
19	1	Notched pinion		
13	1	Gear wheel		
2	1	Parallel key	DIN 6885 A	18x11x40
		Outlet double reduction unit (hollow shaft) 1/05 - 1/25 (2 stages) 1/31- 1/63 (3 stages)		452025791
19	1	Notched pinion		
15	1	Gear wheel		

Gear reduction head series **S45**

Item	Qty.	Description	Standards	Code
2	1	Parallel key	DIN 6885 A	18x7x40
		Outlet double reduction unit (hollow shaft) 1/31 - 1/40 (2 stages) 1/80 (3 stages)		452025792
19	1	Notched pinion		
15	1	Gear wheel		
2	1	Parallel key	DIN 6885 A	18x7x40
		Output flange K		434002776
5	1	Flange		
3	4	TCEI Screw	DIN 912	M12X35
		B4 - B5 - B6 - B7- B8 Output Flange		434002772
5	1	Flange		
3	4	TCEI Screw	DIN 912	M12X35
4	4	Washer	DIN 125 A	M12
4	4	Elastic washer grower	DIN 125 B	M12
		Output Flange B4 - B5 - B6 - B7- B8 (XUJ)		434002775
5	1	Flange		
3	4	TCEI Screw	DIN 912	M12X35
4	4	Washer	DIN 125 A	M12
4	4	Elastic washer grower	DIN 125 B	M12
		ES3 - VE3 Output Flange		434002773
5	1	Flange		
3	4	TE Screw	DIN 933	M12X35
4	4	Washer	DIN 125 A	M12
4	4	Elastic washer grower	DIN 125 B	M12
		ES4 - VE4 Output Flange		434002774
5	1	Flange		
3	4	TE Screw	DIN 933	M12X35
4	4	Washer	DIN 125 A	M12
4	4	Elastic washer grower	DIN 125 B	M12
A	1	Output shaft S45 output B4/ES D.48		358003562
B	1	Output shaft S45 output B5 D.48		358003563
C	1	Output shaft S45 output B6 D.48		452028269
D	1	Output shaft S45 output B7/VE D.48		358003565
E	1	Output shaft S45 output B8 D.48 aisi 304		358003566
E	1	Output shaft S45 output B8 D.48 aisi 316		358003567
F	1	Output shaft S45 output K D.45		358003568
/	1	Output shaft S45 output VE-XAP D.48		358003569
G	1	Hollow output shaft S45 D.45		358003570

S 47



“S 47” TYPE GEAR REDUCTION UNITS

Gear reduction head series — **S47**

Item	Qty.	Description	Standards	Code
		Rotary shaft seal kit S47 - pam -100- 112-132 solid shaft		435001519
29	1	Rotary shaft seal	DIN 3760	AS 60x100x10
11	1	Rotary shaft seal	DIN 3760	A 60x110x12
		Rotary shaft seal kit S47 - pam -100-112-132 hollow shaft		435001520
29	1	Rotary shaft seal	DIN 3760	AS 60x100x10
11	2	Rotary shaft seal	DIN 3760	A 75x110x12
		Rotary shaft seal kit S47 - pam -160- 180 solid shaft		435001521
29	1	Rotary shaft seal	DIN 3760	AS 70x100x10
11	1	Rotary shaft seal	DIN 3760	A 60x110x12
		Rotary shaft seal kit S47 - pam -160-180 hollow shaft		435001522
29	1	Rotary shaft seal	DIN 3760	AS 70x100x10
11	2	Rotary shaft seal	DIN 3760	A 75x110x12
		Rotary shaft seal kit S47 - pam -200 solid shaft		435001523
29	1	Rotary shaft seal	DIN 3760	AS 75x100x10
11	1	Rotary shaft seal	DIN 3760	A 60x110x12
		Rotary shaft seal kit S47 - pam -200 hollow shaft		435001524
29	1	Rotary shaft seal	DIN 3760	AS 75x100x10
11	2	Rotary shaft seal	DIN 3760	A 75x110x12
		Rotary shaft seal kit S47 - C42 solid shaft		435001525
29	1	Rotary shaft seal	DIN 3760	AS 60x100x10
11	1	Rotary shaft seal	DIN 3760	A 60x110x12
		Rotary shaft seal kit S47 - C42 hollow shaft		435001526
29	1	Rotary shaft seal	DIN 3760	AS 60x100x10
11	2	Rotary shaft seal	DIN 3760	A 75x110x12
		Bearing kit S47 - 2 stages with solid shaft output		435001497
26	1	Bearing	6309	45x100x25
23	1	Bearing	6305	25x62x17
18	2	Bearing	6307	35x80x21
12	2	Bearing	6312	60x130x31
27	1	Retaining ring for bore	DIN 472	Ø100
25	1	Retaining ring for shaft	DIN 471	Ø45

Gear reduction head series **S47**

Item	Qty.	Description	Standards	Code
26	1	Bearing kit S47 - 2 stages with hollow shaft output		435001498
23	1	Bearing	6309	45x100x25
18	2	Bearing	6305	25x62x17
12	2	Bearing	6307	35x80x21
27	1	Bearing	6215	75x130x25
25	1	Retaining ring for bore	DIN 472	Ø100
		Retaining ring for shaft	DIN 471	Ø45
31	1	Bearing kit S47 - 3 stages with solid shaft output		435001499
28	1	Bearing	6309	45x100x25
18	2	Bearing	6305	25x62x17
23	2	Bearing	6307	35x80x21
12	2	Bearing	6206	30x62x16
27	1	Bearing	6312	60x130x31
25	1	Retaining ring for bore	DIN 472	Ø100
		Retaining ring for shaft	DIN 471	Ø45
31	1	Bearing kit S47 - 3 stages with hollow shaft output		435001500
28	1	Bearing	6309	45x100x25
18	2	Bearing	6305	25x62x17
23	2	Bearing	6307	35x80x21
12	2	Bearing	6206	30x62x16
27	1	Bearing	6315	75x130x25
25	1	Retaining ring for bore	DIN 472	Ø100
		Retaining ring for shaft	DIN 471	Ø45
9	1	Oil plug kit		13008330A
7	1	Breather plug + gasket		3/8"
34	1	Sealing oil plug + gasket		3/8"
8	1	Inlet/outlet oil plug + gasket		3/8"
		Level plug + gasket		3/8"
33	1	2 stages reducer casing		
6	1	Input S47 (2s) gear reducer casing		378006184
22	1	Output S47 (2s) gear reducer casing		378006189
14	1	DI=35 DE=43 SP=8 Spacer		363002011
		DI=60 DE=70 SP=8 Spacer		363002013
36	1	3 stages reducer casing		
6	1	Input S47 (3s) gear reducer casing		378006845

Gear reduction head series **S47**

Item	Qty.	Description	Standards	Code
6	1	Output S47 (3s) gear reducer casing		378006849
22	1	DI=35 DE=43 SP=8 Spacer		363002011
14	1	DI=60 DE=70 SP=8 Spacer		363002013
27	1	DI=30 DE=35 SP=30 (3s) Spacer		363002012
		PAM Input		
		Motor size 100/112		434002795
35	1	Input flange 100/112		
32	4	TCEI Screw	DIN 912	M12X45
31	4	TCEI Screw	DIN 912	M12X50
30	4	Washer	DIN 125 A	M12
30	4	Elastic washer grower	DIN 125 B	M12
		PAM Input		
		Motor size 132		434002796
35	1	Input flange 132		
32	4	TCEI Screw	DIN 912	M12X45
31	4	TCEI Screw	DIN 912	M12X50
30	4	Washer	DIN 125 A	M12
30	4	Elastic washer grower	DIN 125 B	M12
		PAM Input		
		Motor size 160/180		434002797
35	1	Input flange 160/180		
32	4	TCEI Screw	DIN 912	M12X45
31	4	TCEI Screw	DIN 912	M16X60
30	4	Washer	DIN 125 A	M16
30	4	Elastic washer grower	DIN 125 B	M16
		PAM Input		
		Motor size 200		434002798
35	1	Input flange 200		
32	4	TCEI Screw	DIN 912	M12X45
31	4	TCEI Screw	DIN 912	M16X60
30	4	Washer	DIN 125 A	M16
30	4	Elastic washer grower	DIN 125 B	M16
		C type inlet (belt transmission)		434002799
35	1	"C" Type inlet flange		
32	4	TCEI Screw	DIN 912	M12X35
		1/05 Inlet double reduction unit		

Gear reduction head series — **S47**

Item	Qty.	Description	Standards	Code
		Output gear reducer ratio i 1/05 (drive unit /input)*	(100-112)*	452025873
			(132)*	452025890
			(160)*	452025902
			(180)*	452025914
			(200)*	452025926
			(C)*	452025938
28	1	Input bushing		
24	1	Notched pinion		
21	1	Gear wheel		
20	1	Parallel key	DIN 6885 A	10X8X28
		Inlet double reduction unit 1/06		
		Output gear reducer ratio i 1/06 (drive unit /input)*	(100-112)*	452025874
			(132)*	452025891
			(160)*	452025903
			(180)*	452025915
			(200)*	452025927
			(C)*	452025939
28	1	Input bushing		
24	1	Notched pinion		
21	1	Gear wheel		
20	1	Parallel key	DIN 6885 A	10X8X28
		Inlet double reduction unit 1/07		
		Output gear reducer ratio i 1/07 (drive unit /input)*	(100-112)*	452025875
			(132)*	452025892
			(160)*	452025904
			(180)*	452025916
			(200)*	452025928
			(C)*	452025940
28	1	Input bushing		
24	1	Notched pinion		
21	1	Gear wheel		
20	1	Parallel key	DIN 6885 A	10X8X28
		Inlet double reduction unit 1/08		
		Output gear reducer ratio i 1/08 (drive unit /input)*	(100-112)*	452025876
			(132)*	452025893
			(160)*	452025905
			(180)*	452025917
			(200)*	452025929
			(C)*	452025941

Gear reduction head series **S47**

Item	Qty.	Description	Standards	Code
28	1	Input bushing		
24	1	Notched pinion		
21	1	Gear wheel		
20	1	Parallel key	DIN 6885 A	10X8X28
		Inlet double reduction unit 1/10		
		Output gear reducer ratio i 1/10 (drive unit /input)*	(100-112)*	452025877
			(132)*	452025894
			(160)*	452025906
			(180)*	452025918
			(200)*	452025930
			(C)*	452025942
28	1	Input bushing		
24	1	Notched pinion		
21	1	Gear wheel		
20	1	Parallel key	DIN 6885 A	10X8X28
		Inlet double reduction unit 1/12		
		Gear reducer ratio i 1/12 (drive unit/ input)*	(100-112)*	452025878
			(132)*	452025895
			(160)*	452025907
			(180)*	452025919
			(200)*	452025931
			(C)*	452025943
28	1	Input bushing		
24	1	Notched pinion		
21	1	Gear wheel		
20	1	Parallel key	DIN 6885 A	10X8X28
		Inlet double reduction unit 1/16		
		Output gear reducer ratio i 1/16 (drive unit /input)*	(100-112)*	452025879
			(132)*	452025896
			(160)*	452025908
			(180)*	452025920
			(200)*	452025932
			(C)*	452025944
28	1	Input bushing		
24	1	Notched pinion		
21	1	Gear wheel		
20	1	Parallel key	DIN 6885 A	10X8X28
		Inlet double reduction unit 1/20		

Gear reduction head series **S47**

Item	Qty.	Description	Standards	Code
		Output gear reducer ratio i 1/20 (drive unit /input)*	(100-112)*	452025880
			(132)*	452025897
			(160)*	452025909
			(180)*	452025921
			(200)*	452025933
			(C)*	452025945
28	1	Input bushing		
24	1	Notched pinion		
21	1	Gear wheel		
20	1	Parallel key	DIN 6885 A	10X8X28
		Inlet double reduction unit 1/25		
		Output gear reducer ratio i 1/25 (drive unit /input)*	(100-112)*	452025881
			(132)*	452025898
			(160)*	452025910
			(180)*	452025922
			(200)*	452025934
			(C)*	452025946
28	1	Input bushing		
24	1	Notched pinion		
21	1	Gear wheel		
20	1	Parallel key	DIN 6885 A	10X8X28
		1/31 (2 stages) Inlet double reduction unit		
		Gear reducer ratio i 1/31 (2 stages) (drive unit / input)*	(100-112)*	452025882
			(132)*	452025899
			(160)*	452025911
			(180)*	452025923
			(200)*	452025935
			(C)*	452025947
28	1	Input bushing		
24	1	Notched pinion		
21	1	Gear wheel		
20	1	Parallel key	DIN 6885 A	10X8X28
		1/40 (2 stages) Inlet double reduction unit		

Gear reduction head series — **S47**

Item	Qty.	Description	Standards	Code
		Gear reducer ratio i 1/40 (2 stages) (drive unit / input)*	(100-112)*	452025883
			(132)*	452025900
			(160)*	452025912
			(180)*	452025924
			(200)*	452025936
			(C)*	452025948
28	1	Input bushing		
24	1	Notched pinion		
21	1	Gear wheel		
20	1	Parallel key	DIN 6885 A	10X8X28
		Inlet double reduction unit 1/31 - 1/80 (3 stages)		
		Gear reducer ratio i 1/31 - 1/80 (3 stages) (drive unit/input)*	(100-112)*	452025884
			(132)*	452025901
			(160)*	452025913
			(180)*	452025925
			(200)*	452025937
			(C)*	452025949
28	1	Input bushing		
24	1	Notched pinion		
40	1	Gear wheel		
39	1	Parallel key	DIN 6885 A	8X7X22
		Intermediate double reduction unit- 1/31 (3 stages)		452025886
38	1	Notched pinion		
21	1	Gear wheel		
20	1	Parallel key	DIN 6885 A	10X8X28
		Intermediate double reduction unit 1/40 - 1/63 (3 stages)		452025887
38	1	Notched pinion		
21	1	Gear wheel		
20	1	Parallel key	DIN 6885 A	10X8X28
		Intermediate double reduction unit - 1/50 (3 stages)		452025888
38	1	Notched pinion		
21	1	Gear wheel		
20	1	Parallel key	DIN 6885 A	10X8X28
		Intermediate double reduction unit - 1/80 (3 stages)		452025889

1.0 SPARE PARTS

Gear reduction head series — **S47**

Item	Qty.	Description	Standards	Code
38	1	Notched pinion		
21	1	Gear wheel		
20	1	Parallel key	DIN 6885 A	10X8X28
		1/05 Outlet double reduction unit - 1/25 (2 stages) 1/31- 1/50 (3 stages)		452025869
19	1	Notched pinion		
13	1	Gear wheel		
2	1	Parallel key	DIN 6885 A	18X11X50
		1/31 Outlet double reduction unit - 1/40 (2 stages) 1/63- 1/80 (3 stages)		452025870
19	1	Notched pinion		
13	1	Gear wheel		
2	1	Parallel key	DIN 6885 A	18X11X50
		Outlet double reduction unit (hollow shaft) 1/05 - 1/25 (2 stages) 1/31- 1/50 (3 stages)		452025871
19	1	Notched pinion		
15	1	Gear wheel		
2	1	Parallel key	DIN 6885 A	22X9X50
		Outlet double reduction unit (hollow shaft) 1/31 - 1/40 (2 stages) 1/63- 1/80 (3 stages)		452025872
19	1	Notched pinion		
15	1	Gear wheel		
2	1	Parallel key	DIN 6885 A	22X9X50
		ES5 - VE5 Output Flange		434002777
5	1	Flange		
3	4	TE Screw	DIN 933	M16X45
4	4	Washer	DIN 125 A	M16
4	4	Elastic washer grower	DIN 125 B	M16
		ES4 - VE4 Output Flange		434002778
5	1	Flange		
3	4	TE Screw	DIN 933	M16X45
4	4	Washer	DIN 125 A	M16
4	4	Elastic washer grower	DIN 125 B	M16
		Output flange K		434002779
5	1	Flange		
3	4	TCEI Screw	DIN 912	M16X35
		B4 - B5 - B6 - B7- B8 Output Flange		434002780

Gear reduction head series **S47**

Item	Qty.	Description	Standards	Code
5	1	Flange		
3	4	TCEI Screw	DIN 912	M16X35
4	4	Washer	DIN 125 A	M16
4	4	Elastic washer grower	DIN 125 B	M16
		Output Flange B4 - B5 - B6 - B7- B8 (XUJ)		434002781
5	1	Flange		
3	4	TCEI Screw	DIN 912	M16X35
4	4	Washer	DIN 125 A	M16
4	4	Elastic washer grower	DIN 125 B	M16
A	1	Output shaft S47 output B4/ES D.60		358003571
B	1	Output shaft S47 output B5 D.60		358003572
C	1	Output shaft S47 output B6 D.60		452028270
D	1	Output shaft S47 output B7/VE D.60		358003574
F	1	Output shaft S47 output K D.55		358003575
G	1	Hollow output shaft S47 D.45		358003576

